

# San Francisco: Short-Term Economics and Longer-Term Demographics

Ted Egan, Ph.D.  
November 2, 2011



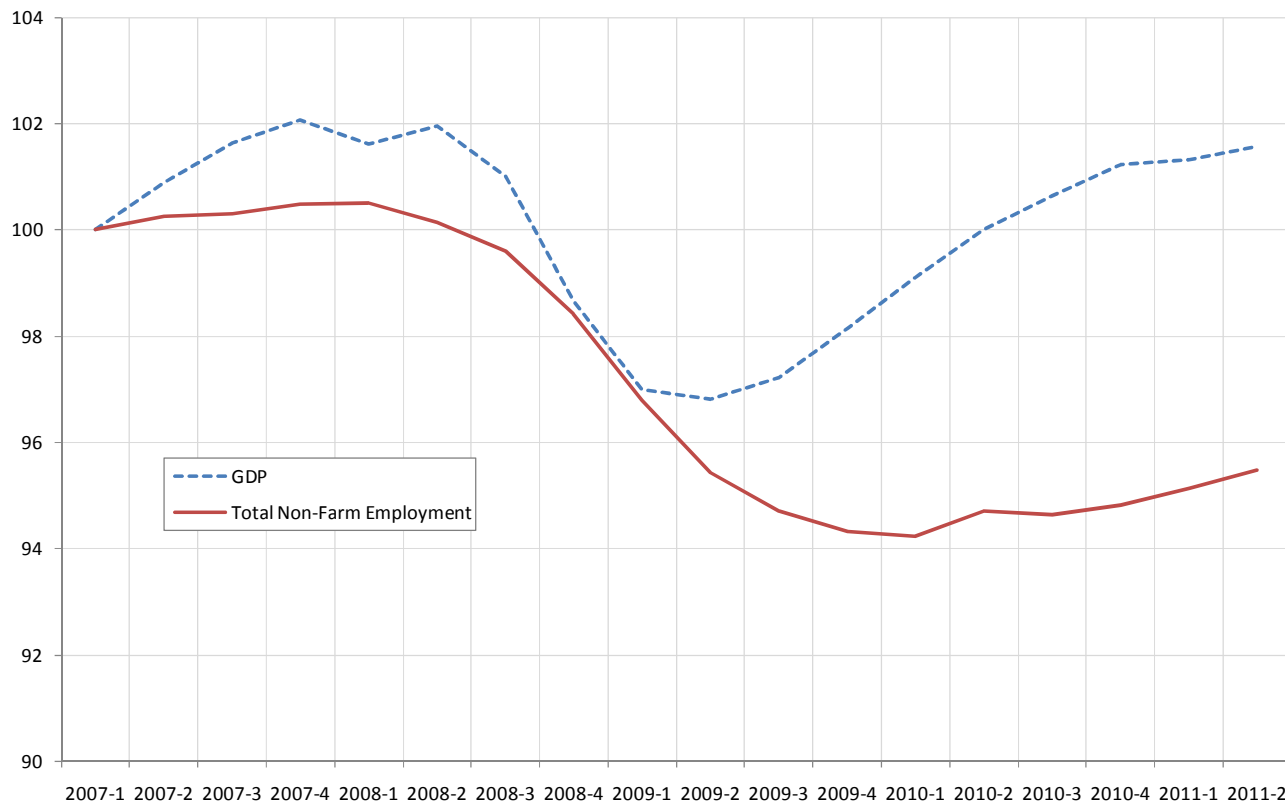
### About the OEA

- A division in the Controller's Office staffed with three economists.
- Created by the passage of Proposition I in 2004.
- Two main statutory responsibilities:
  1. Write economic impact reports on pending legislation that we determine would have a "material economic impact" on the city.
  2. Support the development and updating of the City's economic development plan.
- In addition, the OEA handles requests for economic analysis from the media, outside groups, and City departments.



# U.S. Job Growth Has Come Later, and Been Slower, than GDP

U.S. GDP and Total Non-Farm Employment Indices, 2007-2011  
(2007Q1 = 100)

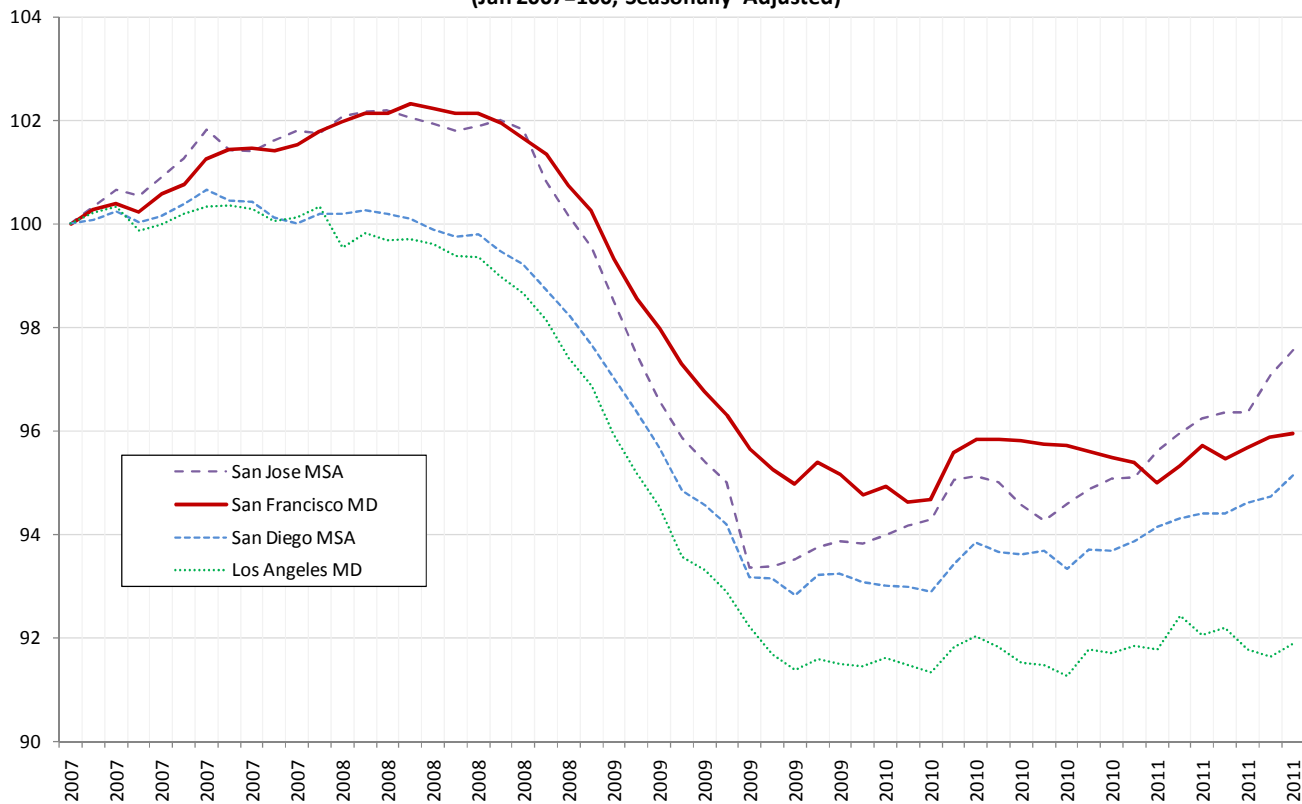


Source: Bureau of Economic Analysis



## In California, Job Growth Has Been Stronger in the Bay Area than the South

**Total Non-Farm Employment Indices, San Francisco Metro Division  
and Three California MSAs, 2007-11**  
(Jan 2007=100, Seasonally -Adjusted)

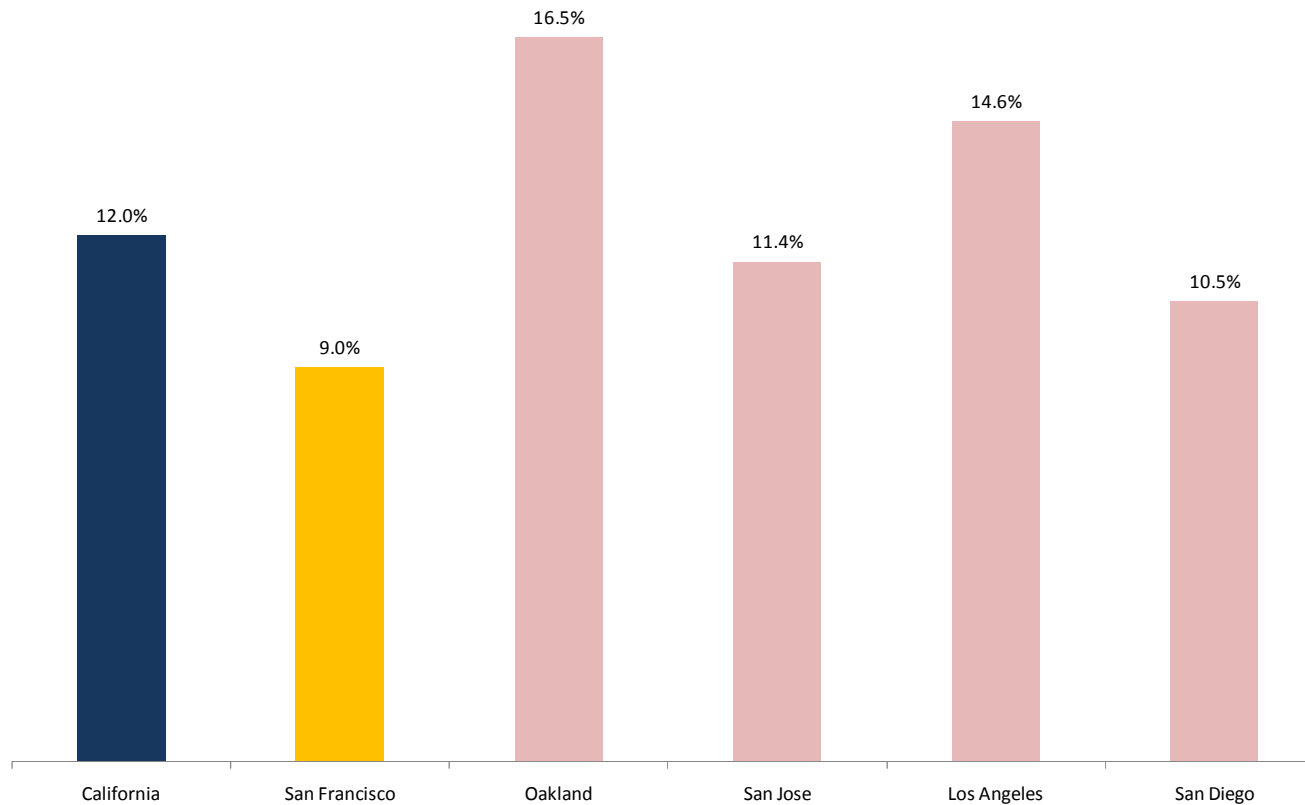


Source: Bureau of Labor Statistics



# San Francisco's Unemployment Remains Significantly Below the State Average

Unemployment Rates:  
California, San Francisco, and Other California Cities, July 2011



Source: Employment Development Department



### Demographics of Unemployment: Age

Population 16 years and over	2007	2009
<b>by AGE</b>	<b>4.9%</b>	<b>9.7%</b>
16 to 19 years	16.1%	33.1%
20 to 24 years	9.8%	13.6%
25 to 44 years	3.4%	8.8%
45 to 54 years	5.3%	9.9%
55 to 64 years	6.6%	9.8%
65 to 74 years	4.5%	4.2%
75 years and over	3.1%	10.0%



## Demographics of Unemployment: Race

Race/Ethnicity	2007	2009
White	4.1%	8.3%
Black or African American	8.4%	20.5%
Asian	5.8%	9.6%
Some other race	4.4%	13.3%
Two or more races	5.8%	16.4%



## Demographics of Unemployment: Education

EDUCATIONAL ATTAINMENT	2007	2009
<b>Population 25 to 64 years</b>	<b>4.3%</b>	<b>9.2%</b>
Less than high school graduate	6.3%	13.9%
High school graduate (includes equivalency)	7.5%	13.2%
Some college or associate's degree	5.7%	10.8%
Bachelor's degree or higher	2.7%	7.3%





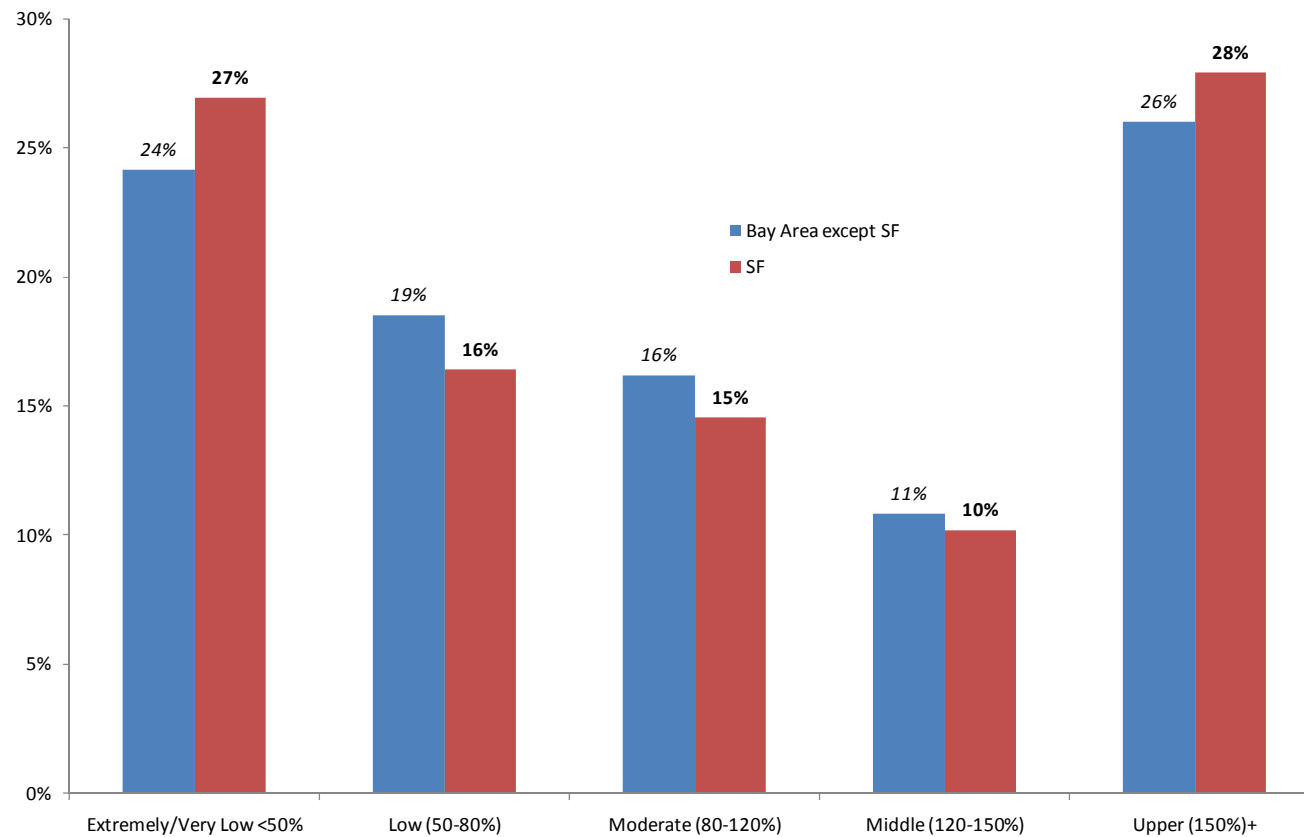
# Growing and Shrinking Industries, San Francisco Metropolitan Division

Industry	Job Change, August 2010-11
Total Non-Farm Employment	7,900
Professional & Technical Services	8,900
Food Services & Drinking Places	3,000
Health Care & Social Assistance	1,900
Educational Services	800
Construction	-400
Manufacturing	-300
Federal Government	-1,000



# Income Distribution in San Francisco and the Bay Area

**Distribution of Population by Household Income Category,  
San Francisco and Remainder of Bay Area, 2005-9**



Source: U.S. Census American Community Survey  
2005-9 5 year sample / IPUMS

## Longer-Term Demography: Population, Race, Latino Origin

- The City's population increased by 0.7% per year during the 1990s, and by 0.4% during the 2000s.
- Comparison of population by race categories is difficult because the categories change. However, a few things are clear:
  - The White, Non-Latino population (42% of 2010 total) was essentially unchanged over the past 10 and 20 years.
  - The Asian, Non-Latino population (33% of 2010 total) grew by 1.1% per year over the past 10 years, and 1.3% over the past 20 years.
  - The African-American, Non-Latino population (6% of 2010 total) declined by 2.3% per year over the past 10 years, and 2.4% over the past 20 years.
  - The Latino population (all races, 17% of 2010 total) increased by 2.1% over the past 10 years, and 1.0% over the past 20 years.



## Longer-Term Demography: Age

	1990	2000	2010
Under 18 years	116,883	112,802	107,524
18 to 24 years	74,883	70,596	77,664
25 to 44 years	288,387	314,222	301,802
45 to 64 years	138,426	173,002	208,403
65 to 74 years	57,270	53,955	54,322
75 to 84 years	35,962	37,929	38,029
85 years and over	12,148	14,227	17,491

